



AVAILABLE

1414 Ballenger Lane COLUMBIA, MO 65201

High Growth Area

- 2 acres
- Can be joined with 8.6 acres to the south
- Faces Ballenger Lane, just north of Clark Lane round-about
- Zoned Neighborhood Commercial
- High growth area
 - Battle High School
 - Battle Elementary
 - Green at Columbia
 - The Links
 - Sunset Ridge
 - Redstone

Copyright © 2023 Boulevard Realty. Information herein has been obtained from sources deemed reliable, however its accuracy cannot be guaranteed. The user is required to conduct their own due diligence and verification.

Land For Sale:

\$449,000

2 acres

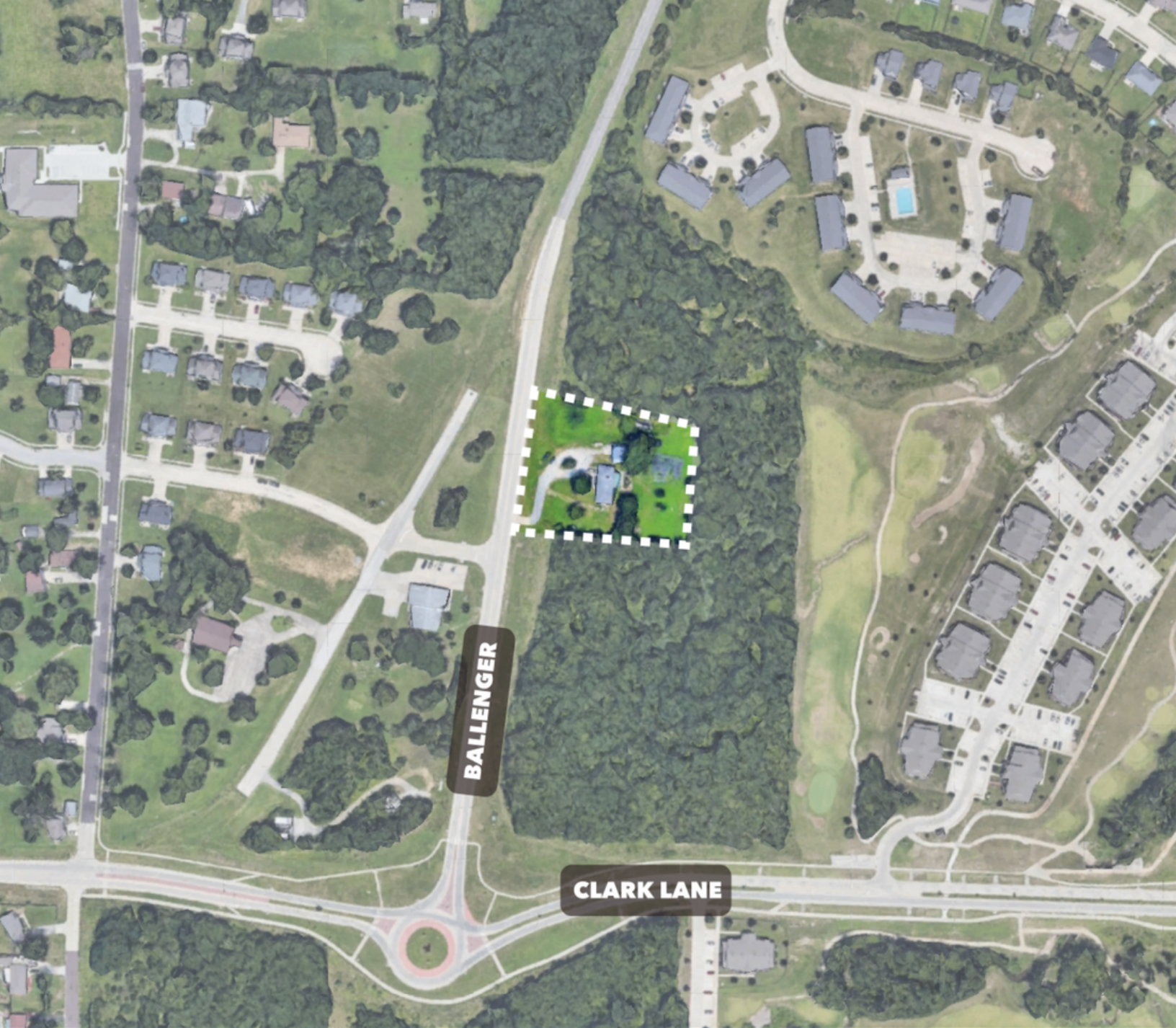
**CONTACT
BROKERS**

Contact Us:

John John
(573) 881-0332
john@johnx2.com

Drew Holtwick
(573) 319-1242
drew@blvdmo.com

Boulevard Realty
1000 Nifong Blvd
Suite 8-110
573-444-1212
info@blvdmo.com



BALLENGER

CLARK LANE

blvd
REALTY

John John
(573) 881-0332
john@johnx2.com

Drew Holtwick
(573) 319-1242
drew@blvdmo.com

Boulevard Realty
1000 Nifong Blvd
Suite 8-110
573-444-1212
info@blvdmo.com

www.blvdcommercial.com